



REALTOR VILLE  
— PROPERTY GROUP —

We Build.  
*You Thrive.*



Welcome to our  
January, 2026 Newsletter!

In this edition, we spotlight Ruwa-Dabuka Village, an exclusive chance to secure prime residential land. Luxury stands, flexible terms, and ready Title Deeds await those who value space, quality, and long-term growth.

Discover why this development is more than property, it's an opportunity to shape your future...

# Luxury Stands, Flexible Terms: Discover Ruwa-Dabuka Village

---



At Realtor Ville, we believe land is more than space, it's the foundation of your future. Our Ruwa-Dabuka Village development offers luxury ready-to-build stands designed for those who value quality, serenity, and long-term growth.

Each 500sqm plot is competitively priced at USD 75 per sqm, with flexible terms: a 50% deposit and balance payable over three months. With Title Deeds ready, you gain peace of mind and security from day one.

The development is enhanced with essential infrastructure, roadworks, water and sewer systems, and surveys, ensuring every stand is prepared for construction. Guided by our advisory and sales experts, the process from valuation to settlement is seamless.

Whether you're planning your dream home or investing in tomorrow's lifestyle, Ruwa-Dabuka Village is more than property, it's an opportunity to build your legacy in one of Zimbabwe's most promising communities.

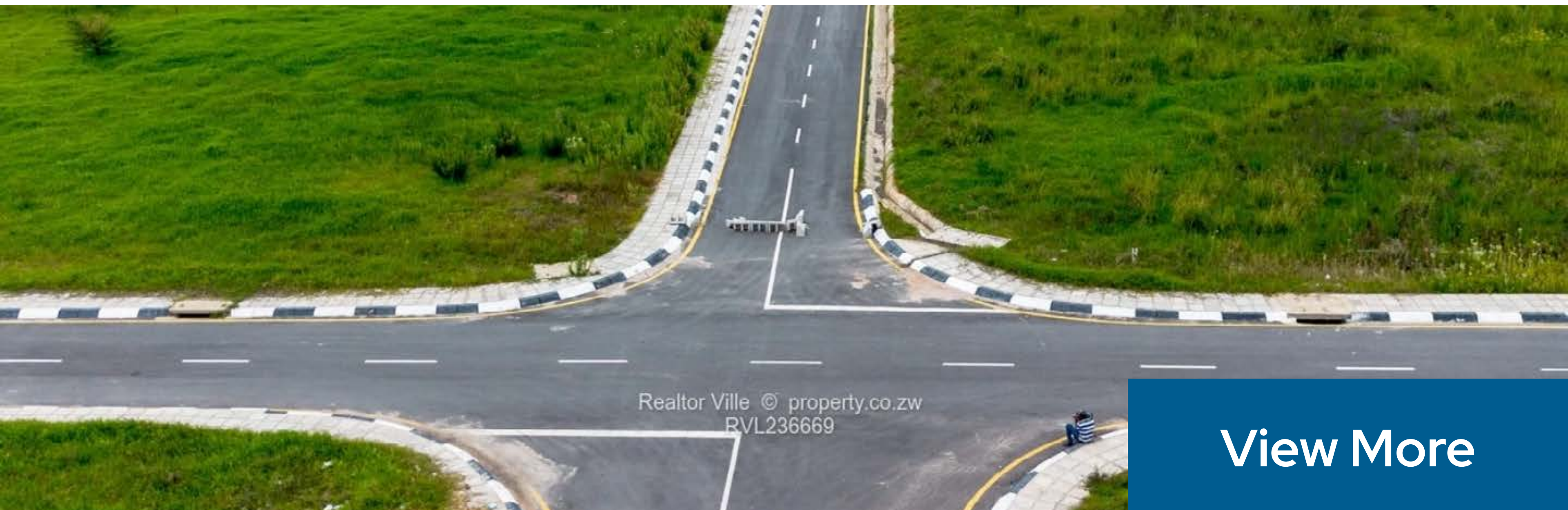
[See More](#)



**Romeo**  
Sales Consultant

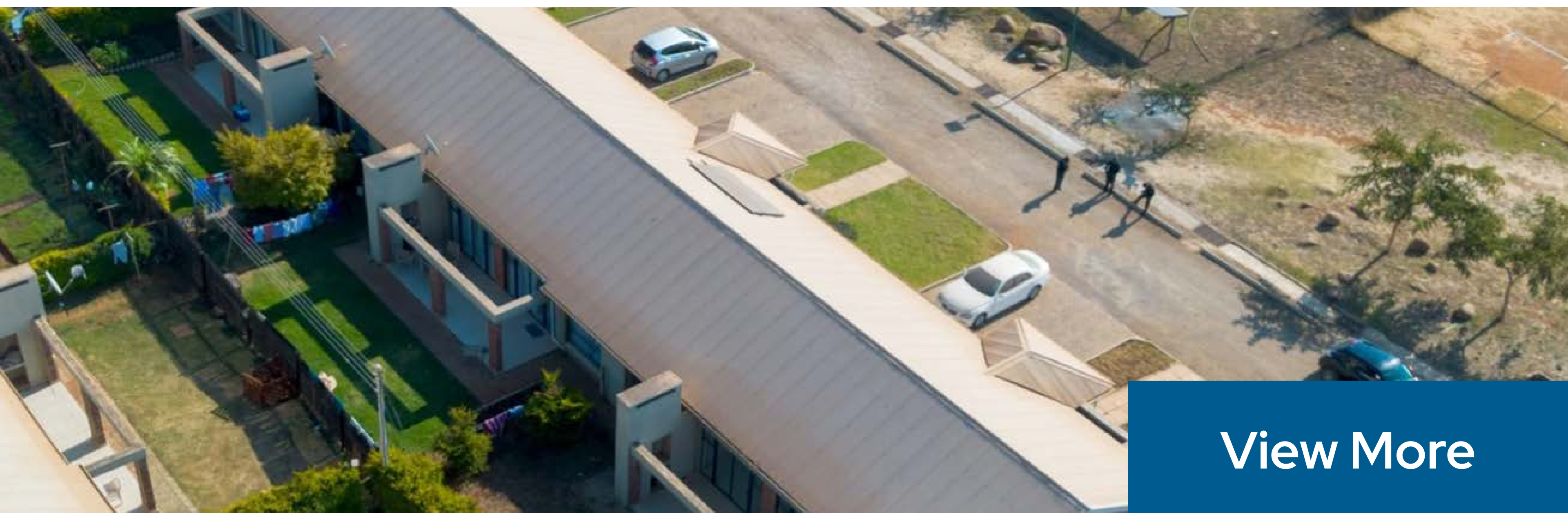
# Featured Listings

Spotlight on Prime Properties: Exclusive insights and details on the hottest properties on the market.



## Dabuka Village Residential Stands, Ruwa

Sizes averaging 510 sqm<sup>2</sup>, \$75sqm<sup>2</sup> exclusive of VAT, Tarred Roads, Sewer Reticulation and Water reticulation complete, Acceptable terms of 50% deposit, Price: US\$37,500



## Charming 3-Bedroom Garden Flat for Sale in Malborough

Say hello to this charming 3-bedroom garden flat in Malborough, where the grass is greener, the vibes are cozier, and the commute to the fridge is always scenic. Size: 80 m<sup>2</sup>, Asking Price: US\$140,000



## Lake City Kumvura Estate

Nestled near the serene shores of Lake Chivero, these plots range from 1000sqm to 2000 sqm, allowing you to choose the ideal size for your dream home or investment. Price: US\$35 per m<sup>2</sup>

# Listings

Discover Your Dream Home! Dive into our curated listings and find the perfect place to call yours.

## Properties For Sale



Click the highlighted text to view the full content.

Location	Size	Bedrooms	Price	Terms
<a href="#">The Grange, Harare North</a>	4,000 m <sup>2</sup>	3 bed	\$280 000	N/A
<a href="#">Harare City Centre</a>	280 m <sup>2</sup>	N/A	\$1 700 000	Negotiable
<a href="#">Kariba, Mashonaland West</a>	2 100 m <sup>2</sup>	6 bed	\$199 000	N/A
<a href="#">The Grange, Harare North</a>	4,000 m <sup>2</sup>	3 bed	\$260 000	N/A
<a href="#">Marlborough, Harare West</a>	500 m <sup>2</sup>	3 bed	\$62 500	Negotiable
<a href="#">Southerton, Harare South</a>	4 700 m <sup>2</sup>	N/A	\$3 000 000	Negotiable
<a href="#">Waterfalls, Harare South, Harare</a>	4 090 m <sup>2</sup>	4 bed	\$220,000	Negotiable
<a href="#">Hogerty Hill, Harare North</a>	2 159 m <sup>2</sup>	5 bed	\$500 000	Negotiable
<a href="#">Carrick Creagh, Harare North</a>	4 Hectares	9 bed	\$4,500,000	Negotiable
<a href="#">Waterfalls, Harare South</a>	5 100 m <sup>2</sup>	4 bed	\$140 000	Negotiable
<a href="#">Hatfield, Harare South</a>	400 m <sup>2</sup>	5 bed	\$240 000	Negotiable
<a href="#">Carrick Creagh, Harare North</a>	500 m <sup>2</sup>	5 bed	\$220 000	Negotiable
<a href="#">Avondale West, Harare West</a>	793 m <sup>2</sup>	3 bed	\$310 000	Negotiable
<a href="#">Dzivarasekwa, Harare High Density</a>	300 m <sup>2</sup>	5 bed	\$45,000	Negotiable
<a href="#">Sandton Park, Harare West</a>	1 250 m <sup>2</sup>	3 bed	\$145 000	Negotiable
<a href="#">Greendale, Harare East</a>	200 m <sup>2</sup>	3 bed	\$225 000	Negotiable

For more 'For Sale' listings, [click here.](#)

## Properties To Let



Click the highlighted text to view the full content.

Location	Size	Bedrooms	Price /mo.	Terms
<a href="#">Aspindale Park, Harare West</a>	100 m <sup>2</sup>	2 bed	\$550	N/A
<a href="#">Greendale, Harare East</a>	150 m <sup>2</sup>	2 bed	\$1,210	N/A
<a href="#">Hatfield, Harare South</a>	1,000 m <sup>2</sup>	4 bed	\$1,000	N/A
<a href="#">Greendale, Harare East</a>	150 m <sup>2</sup>	3 bed	\$1,000	N/A
<a href="#">New Marlborough, Harare West</a>	N/A	3 bed	\$1 200	N/A
<a href="#">Hatfield, Harare South</a>	2 000 m <sup>2</sup>	N/A	\$2,500	N/A
<a href="#">Waterfalls, Harare South</a>	1 000 m <sup>2</sup>	3 bed	\$500	N/A
<a href="#">Avenues, Harare CBD</a>	20 m <sup>2</sup>	N/A	\$350	N/A
<a href="#">Avondale, Harare North</a>	100 m <sup>2</sup>	3 bed	\$1 400	N/A
<a href="#">Greendale, Harare East</a>	900 m <sup>2</sup>	N/A	\$930	N/A

<a href="#">Greendale, Harare East</a>	200 m <sup>2</sup>	3 bed	\$1,200	N/A
<a href="#">The Grange, Harare North</a>	90 m <sup>2</sup>	2 bed	\$700	N/A
<a href="#">Borrowdale West, Harare North</a>	95 m <sup>2</sup>	2 bed	\$1 650	N/A
<a href="#">Emerald Hill, Harare West</a>	600 m <sup>2</sup>	6 bed	\$1,800	N/A

For more 'To Let' listings, [click here.](#)

## Residential Stands For Sale



Click the highlighted text to view the full content.

Location	Floor	Price	Terms
<a href="#">Norton, Mashonaland West</a>	300 m <sup>2</sup>	\$10,500	Taking reasonable offer
<a href="#">Greendale Harare East</a>	400-700 m <sup>2</sup>	\$140 per m <sup>2</sup>	50% & balance over 6 months
<a href="#">Hatfield(Airport Road), Harare South</a>	500 m <sup>2</sup>	\$55 000	50% & balance over 6 months
<a href="#">Borrowdale Harare North Stand</a>	200-264 m <sup>2</sup>	\$100 per m <sup>2</sup>	50% & balance over 8 months
<a href="#">Granary Park, Harare High Density</a>	300 m <sup>2</sup>	\$14 000	50% & balance over 3 months
<a href="#">Northway 273, Waterfalls Stand</a>	500 m <sup>2</sup>	\$35 000	50% & balance over 3 months
<a href="#">Glenforest Plots</a>	2 Ha	\$150 000	50% & balance over 6 months
<a href="#">Sandton Park, Harare</a>	963 m <sup>2</sup>	\$38 000	Taking reasonable offers
<a href="#">Goromonzi, Mashonaland East</a>	9.7 Hectares	\$700 000	Taking reasonable offers
<a href="#">Greendale, Harare East</a>	408 m <sup>2</sup>	\$57 120	Taking reasonable offer
<a href="#">Msasa, Harare East</a>	2,000 m <sup>2</sup>	\$200 000	Taking reasonable offer
<a href="#">Carrick Creagh, Borrowdale</a>	467 m <sup>2</sup>	\$55 000	50% & balance over 6 months
<a href="#">Carrick Creagh, Borrowdale</a>	2 100 m <sup>2</sup>	\$126 000	Taking reasonable offer
<a href="#">Greendale, Harare East</a>	3,004 m <sup>2</sup>	\$170 000	Taking reasonable offer
<a href="#">Nyabira, Mashonaland West</a>	300 m <sup>2</sup>	\$21 000	Taking reasonable offer
<a href="#">Nyeredzi Ridge, Harare North</a>	549 m <sup>2</sup>	\$55,000	50% & balance over 3 months
<a href="#">Vumba, Manicaland</a>	121 000 m <sup>2</sup>	\$400,000	Taking reasonable offer
<a href="#">Lake City, Lake Chivero</a>	1 000 m <sup>2</sup>	\$35 000	Taking reasonable offer
<a href="#">Hatfield, Harare South</a>	300 m <sup>2</sup>	\$18 000	Taking reasonable offer
<a href="#">Nyamandlovu, Bulawayo</a>	10 Hectares	\$20 000	Taking reasonable offer

For more 'Stands For Sale' listings, [click here.](#)

# Contact Our Agents

 Click any thumbnail to view contact details.



**Aaron**  
Group CEO



**Kudzai**  
Managing Director



**Debra**  
Property Consultant



**Tafadzwa**  
General Manager



**Eugene**  
Sales Negotiator



**Romeo**  
Sales Consultant



**Unotidaishe**  
Sales Consultant



**Fungai**  
Property Consultant

Stay in the know!



[Find us on Google Maps](#)

